

CONTENTS

3 Hand Held

C

Communication19

D

Dataset9
Dataset Parameters10
Day Selection.....17
Disk Warning.....18

H

Hand Held Setup.....2

M

Main Menu6

P

Password Entry8
PC Communications Software3

R

Reload Hand Held Software20
Round Changed15
Round Direction Message14
Round Direction Messages.....13
Round Parameters.....11

S

Set up Hand Helds5
Setting Parameters7
Setup of Communications Software4

T

Temporary Disk Setup.....16

The page is left blank intentionally

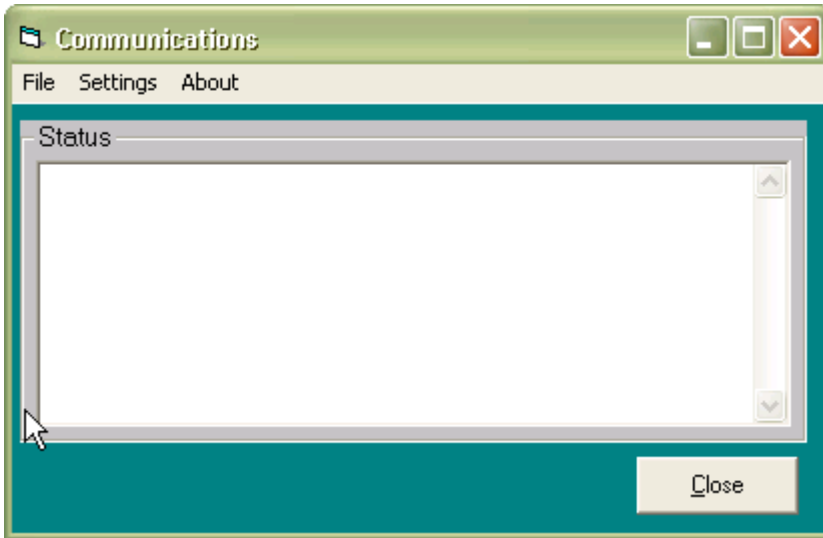
Hand Held Configuration

The Hand Held units are normally supplied with the software fully installed.

You will need to use the software install routines if there is a problem or a Hand Held is replaced and the software has not been installed.

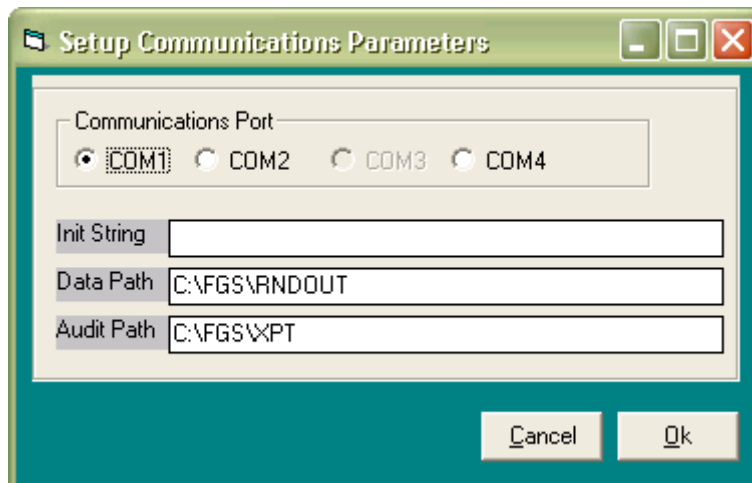
Rcom needs to have been installed before this can be done. If there is a problem with rcom then Psiwin can be used. These items of software are provided on the hand held CD.

Hand Held Configuration



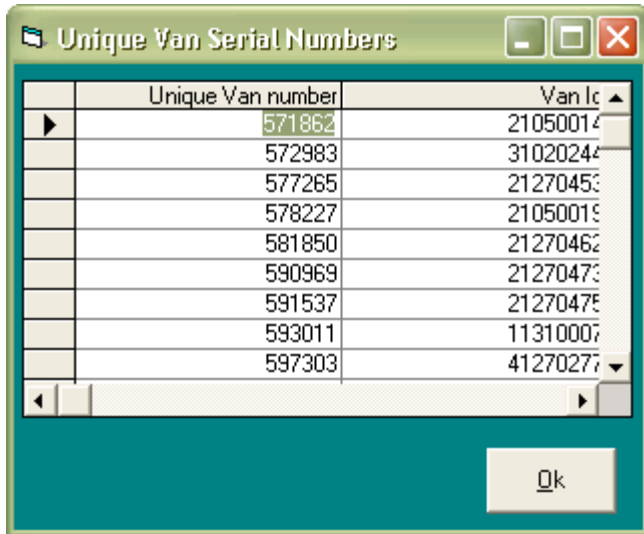
This is the status screen of the communications screen. This should be set to run minimised so that the icon is on the start bar.

Hand Held Configuration



This is the setup screen for the PC communications. The system will default to the first communications port available, you will need to select another one if this one is used by another communications device. The port selected should match the port that the cradle is connected to.

Hand Held Configuration



You will be given a list of the serial numbers of the units that you have purchased, along with an unlock code for the Hand Held and another one for the PC.

The screen above allows you to input the unit serial number and the matching pc unlock code. All units that you have will be listed in the above list.

Main Menu



This is the main menu for the Hand Held routines.

Option 1 is the communications routines.

Option 2 is to manually export Roundsman data.

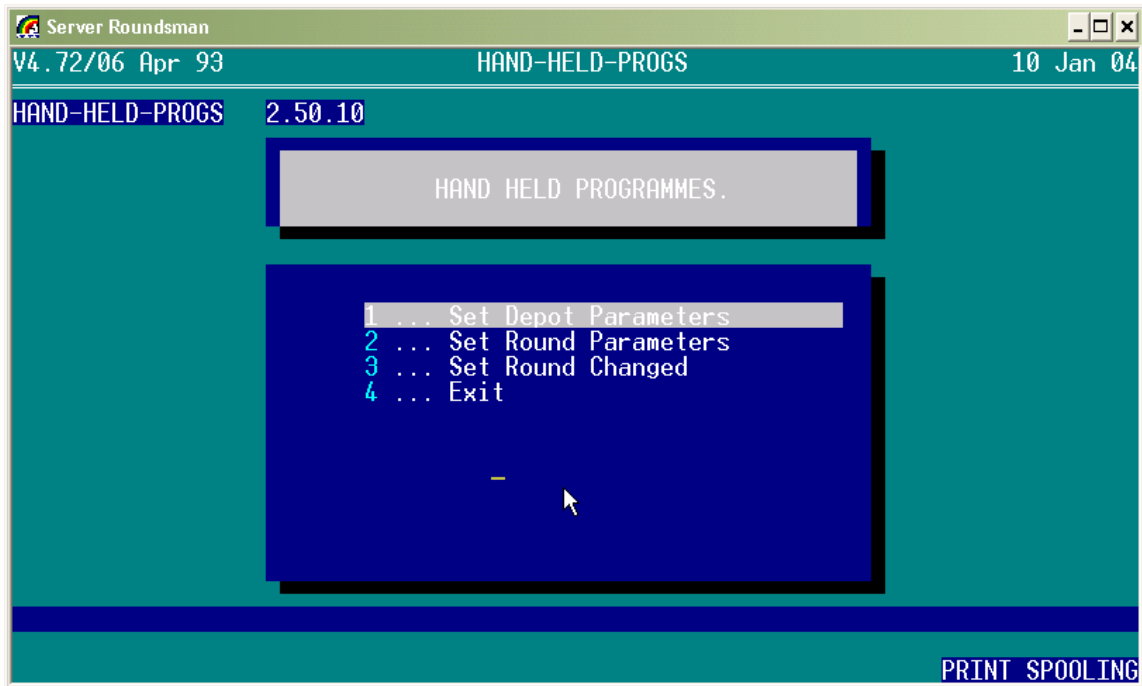
Option 3 is to manually import Hand Held data.

Option 4 is to set up the Hand Held parameters.

Option 5 is to create temporary floppy disks.

Option 6 is to reload the software onto a blank Hand Held.

Option 4

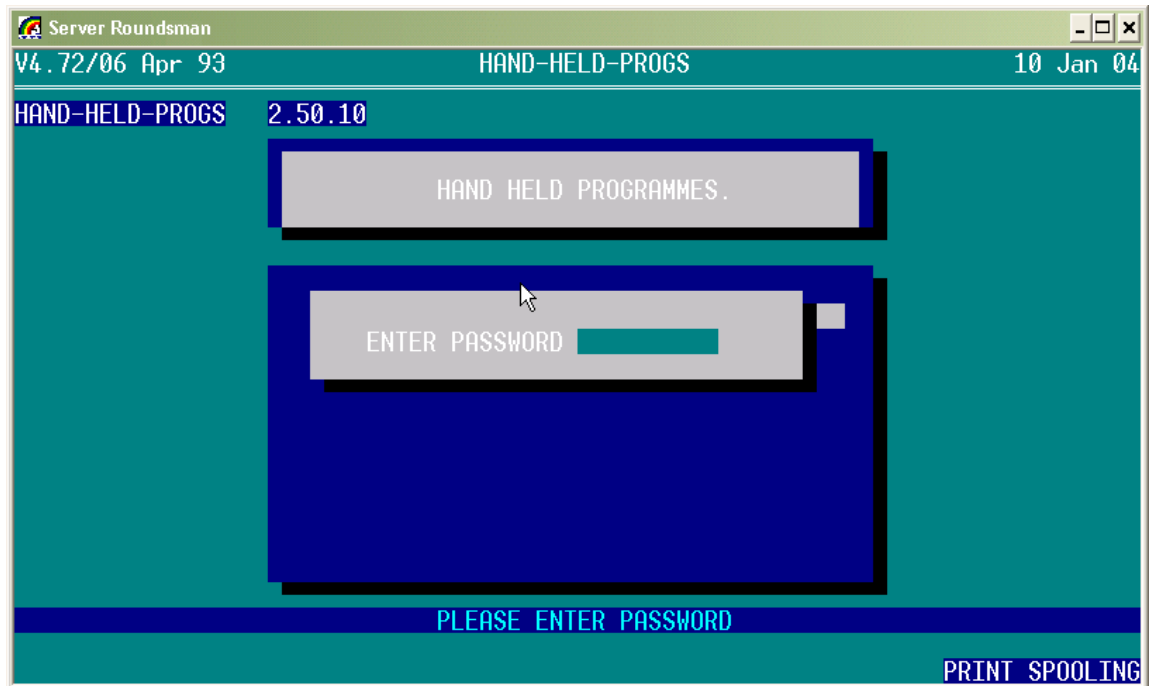


Option 1 is to set up the depot parameters

Option 2 is to set up the round parameters

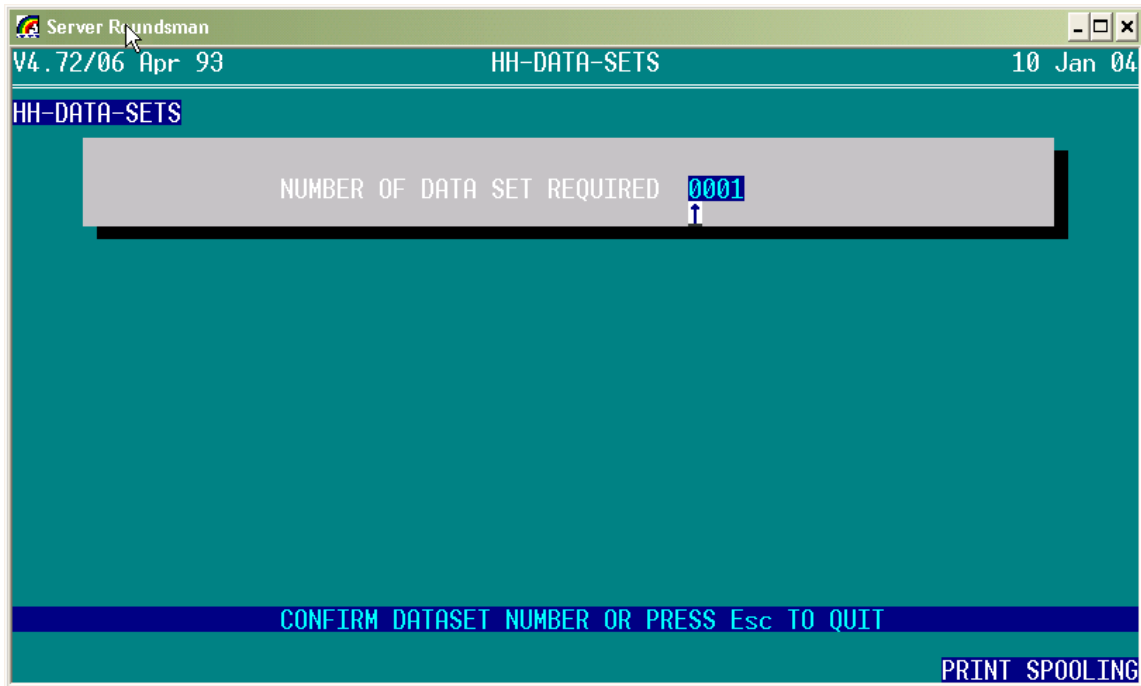
Option 3 is to manually set round changed.

Option 4, 1



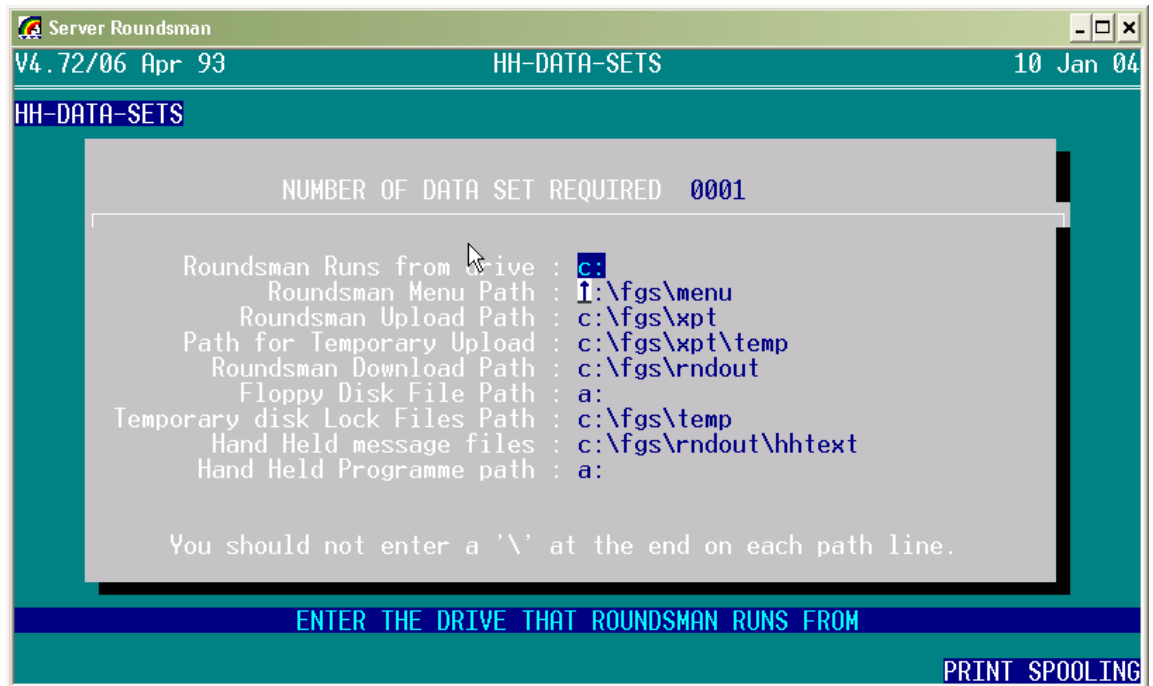
Entry of the depot parameters requires you to use the system password and to have the top security level.

Option 4, 1



Input or select the data set required. Most systems will only have one data set so set to 0001.

Option 4, 1



- Set the drive that your computer boots from.
- Set the path to the Roundsman Menu files directory.
- Set the path to the upload file storage directory.
- Set the path to the temporary upload directory.
- Set the path to the download file directory.
- Set the path to the temporary storage for the upload files, normally the floppy drive.
- Set the path to the temporary lock files. These are used to create the temporary disks.
- Set the path to the text files that control the hand held communications.
- Set the path to the drive and directory that stores the Hand Held programmes.

Option 4, 2

Server Roundsman
V4.72/06 Apr 93 HH-DATA-SETS 10 Jan 04

HH-DATA-SETS

NUMBER OF DATA SET REQUIRED 0001

	SUN	MON	TUE	WED	THU	FRI	SAT
Imported	N	N	N	N	N	N	N
Exported	I	N	N	N	N	N	N

Seperate Collection Sequence : Y Default Printer Type : P
Display Customer Messages : N Allow Printer Switch : N
Display Round Directions : N Automatic Import : Y
No Weeks History : 2 Automatic Export : Y
Use Round Reconciliation : N Display Arrears/Total : A
Round Delivery Note Number : 0001
Dial In Number :

MARK DAYS AS IMPORTED

PRINT SPOOLING

This option allows you to set the parameters for each round.

Set the imported and exported days to N.

Separate collection sequence. This allows the hand held to run a collection sequence which is different to the delivery sequence.

Display customer messages. This sets the default way in which the hand held handles direction messages. This setting can be changed on the Hand Held if required.

Display Round messages. This sets the default way in which the hand held handles round direction messages. This setting can be changed on the Hand Held if required.

No of weeks history. This is for future use.

Use Round Reconciliation. This sets whether you are using stock control on the Hand Held units.

Round delivery note number. Set the start number for delivery notes generated on the Hand Held, these numbers are prefixed with the round number.

Dial in number. This only used where the Hand Held is remote from the main depot computer.

Default printer type. P = parallel, S = Serial, P is used to print to an office based printer connected to the cradle. P is used to print on the TP2000 machines with the built in printer.

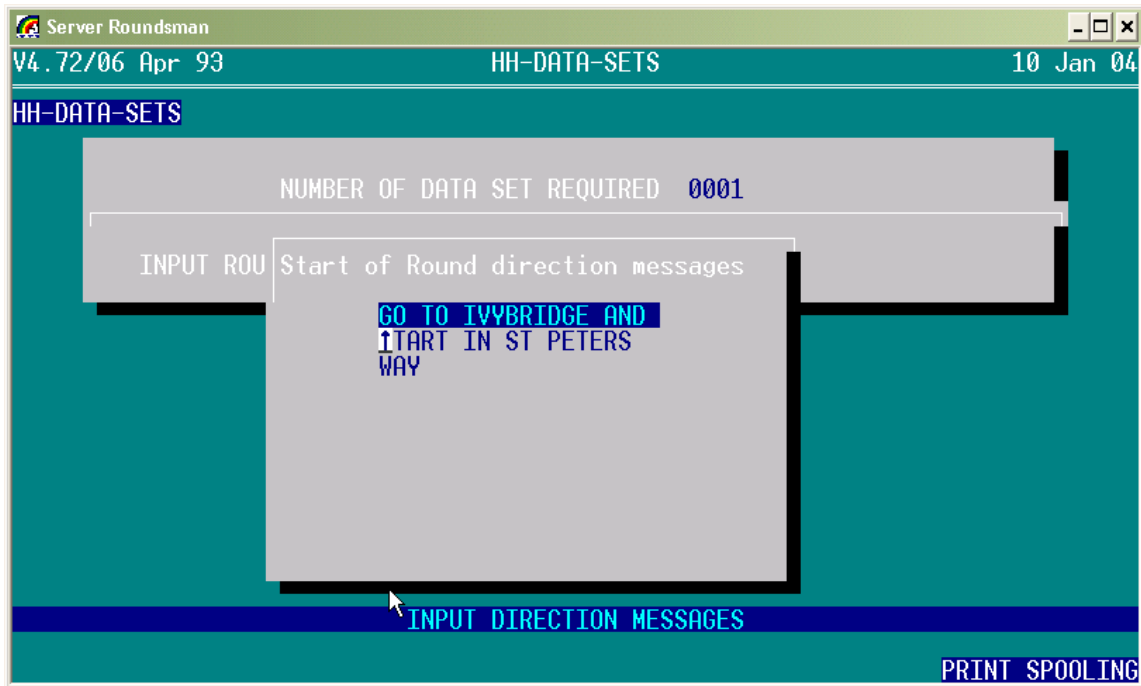
Allow printer switch. This allows the user to change the printer that is used on the individual Hand Held unit.

Allow automatic import. This is used to import the Hand Held data automatically on upload.

Allow automatic reload. This is used to export and reload the Hand Held automatically when importing the data. This then achieves an automatic run from uploading the data to downloading the data leaving the Hand Held ready for the next day.

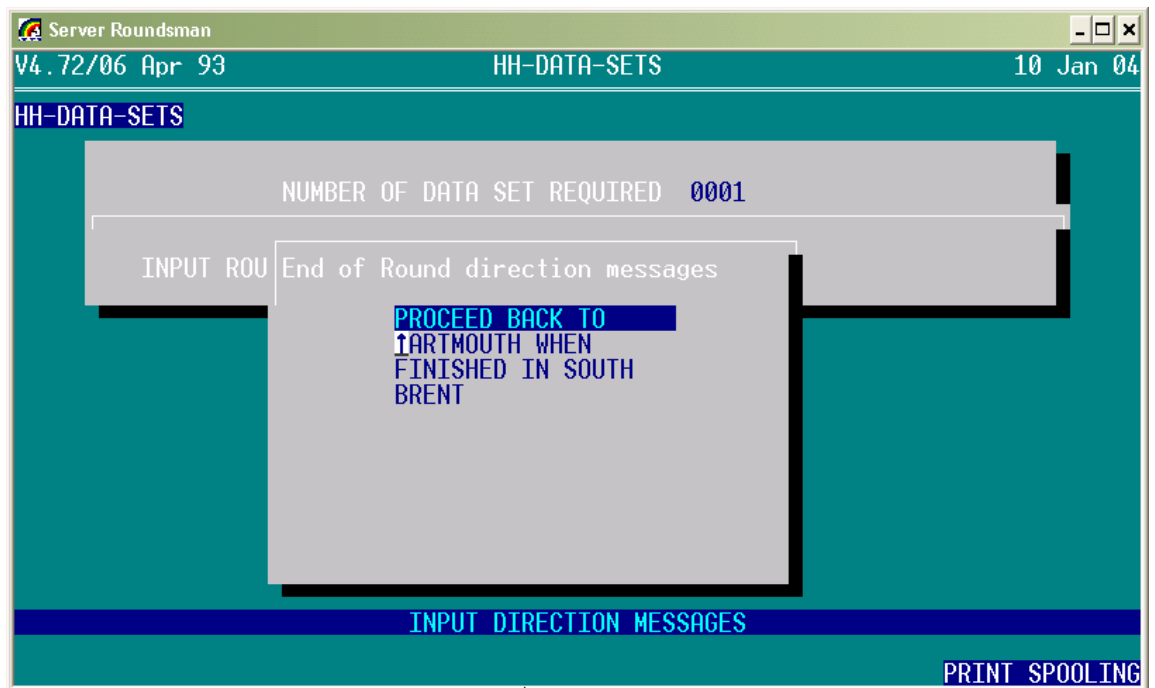
Display Arrears/Total. When making payments on the Hand Held, this controls the default payment displayed. Arrears means what was due at the end of the previous week. Total means the total due based on the orders in the unit till the end of the current week.

Option 4, 2



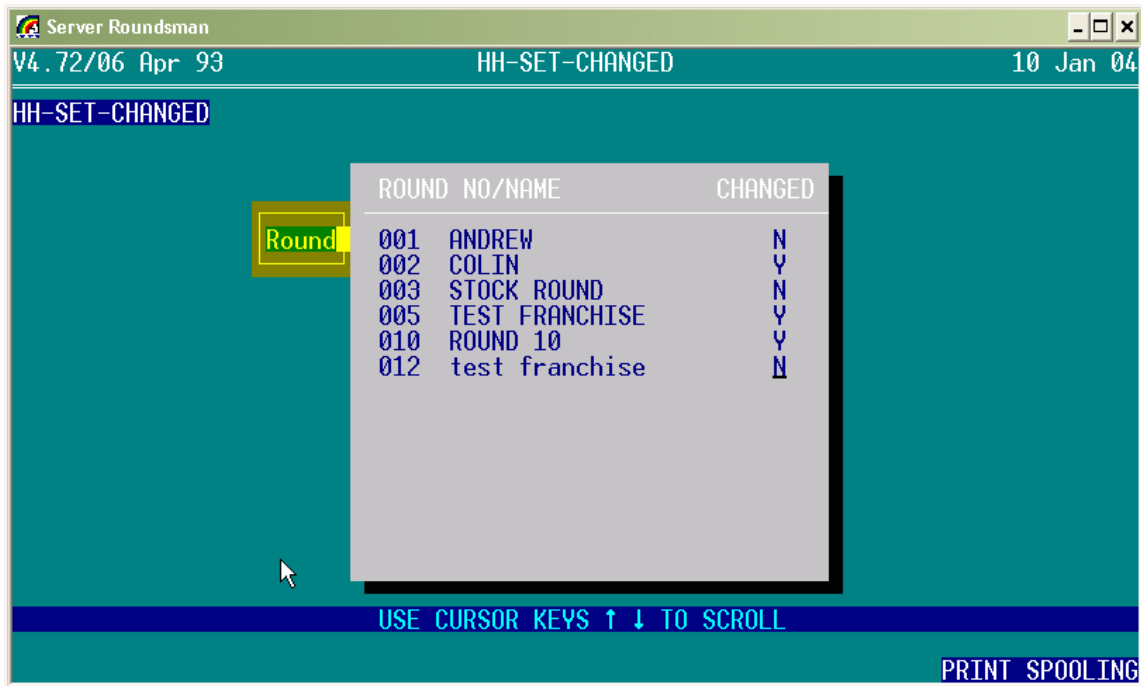
Start of Round directions. These are controlled by the message display setting but gives the Roundsman directions to his first call.

Option 4, 2



End of Round directions. These are controlled by the message display setting but gives the Roundsman directions back to the depot.

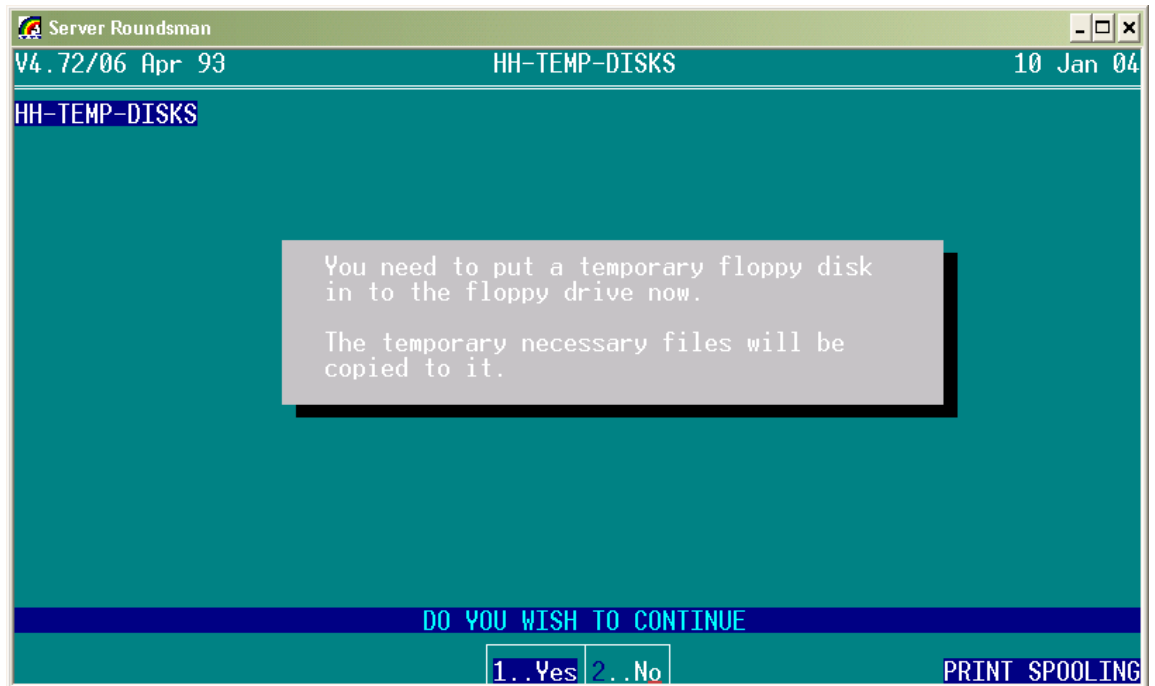
Option 6



This screen allows you to confirm and change the round data changed status flag on each round.

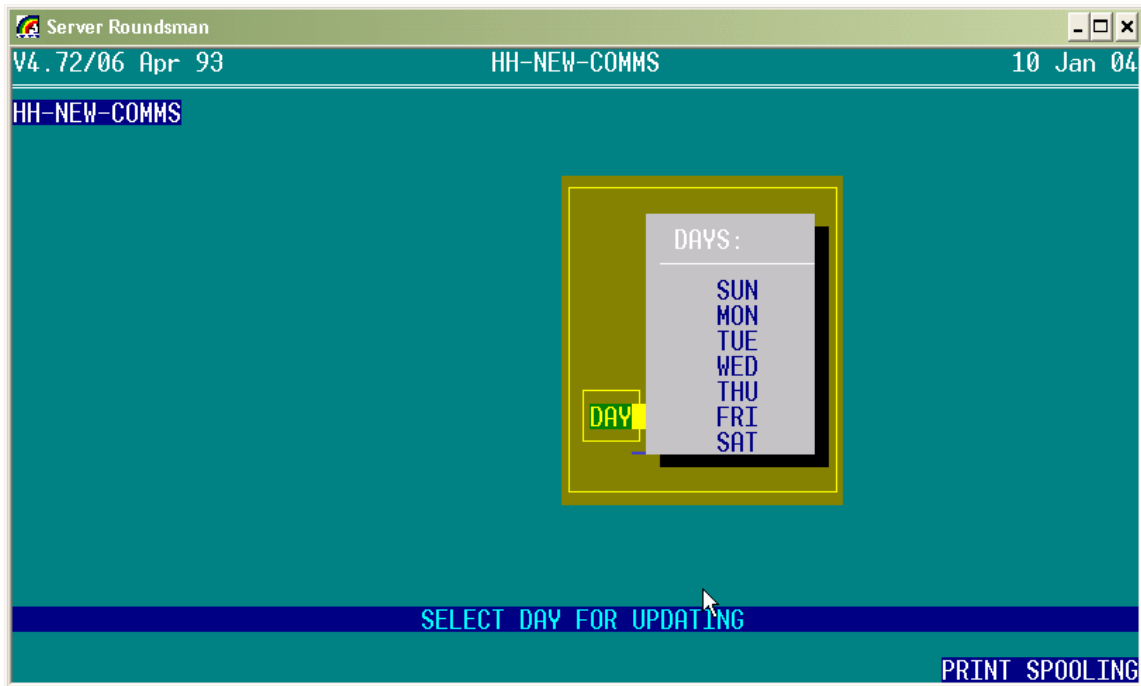
This option can also be set up on a hot key combination for quick access.

Option 5



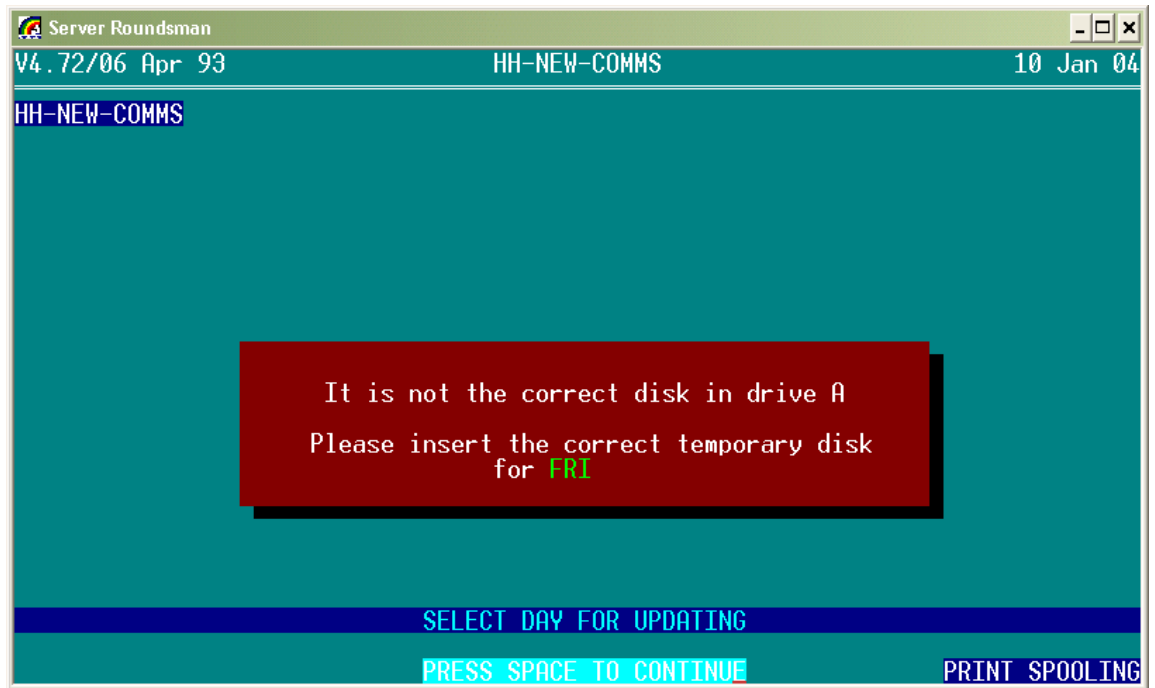
From this option you can create temporary disks. You get the option to create a single disk for each day, or a disk for all days. The all days disk should only be used as an extra disk. You should create a separate disk for each day, this then allows the data for each week to be safe incase of a problem. One disk will hold all audit files for all of the rounds attached to the data set in use.

Option 1



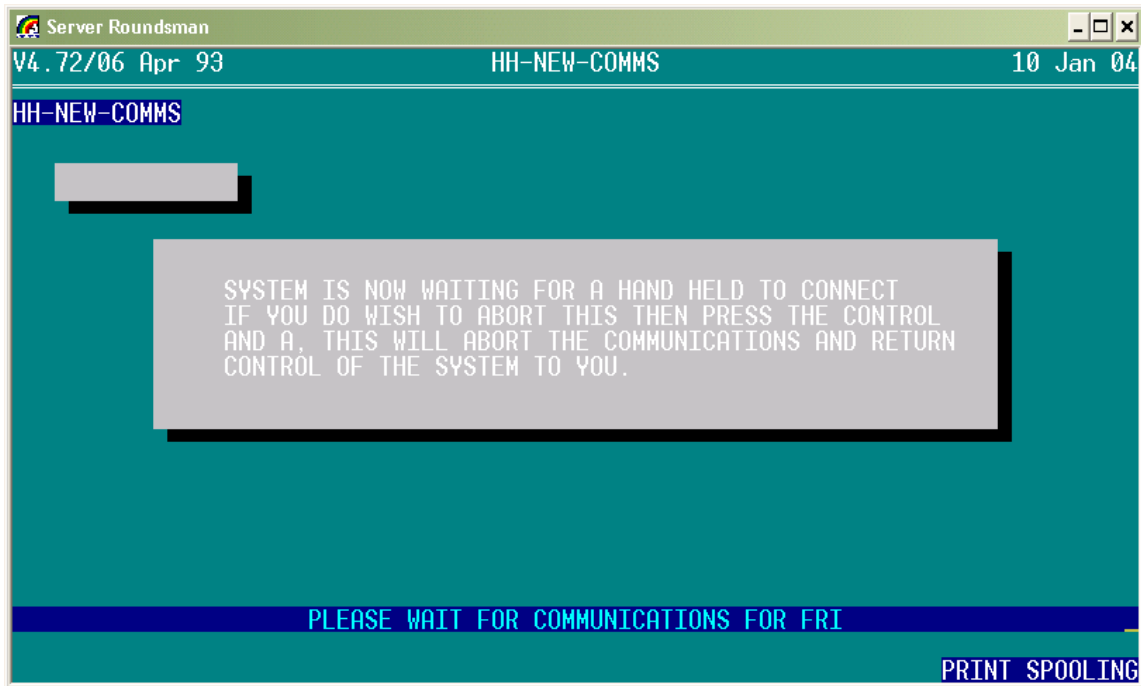
When you go into the communications you need to select the day that you are on. The correct temporary disk needs to be in the floppy drive.

Option 1



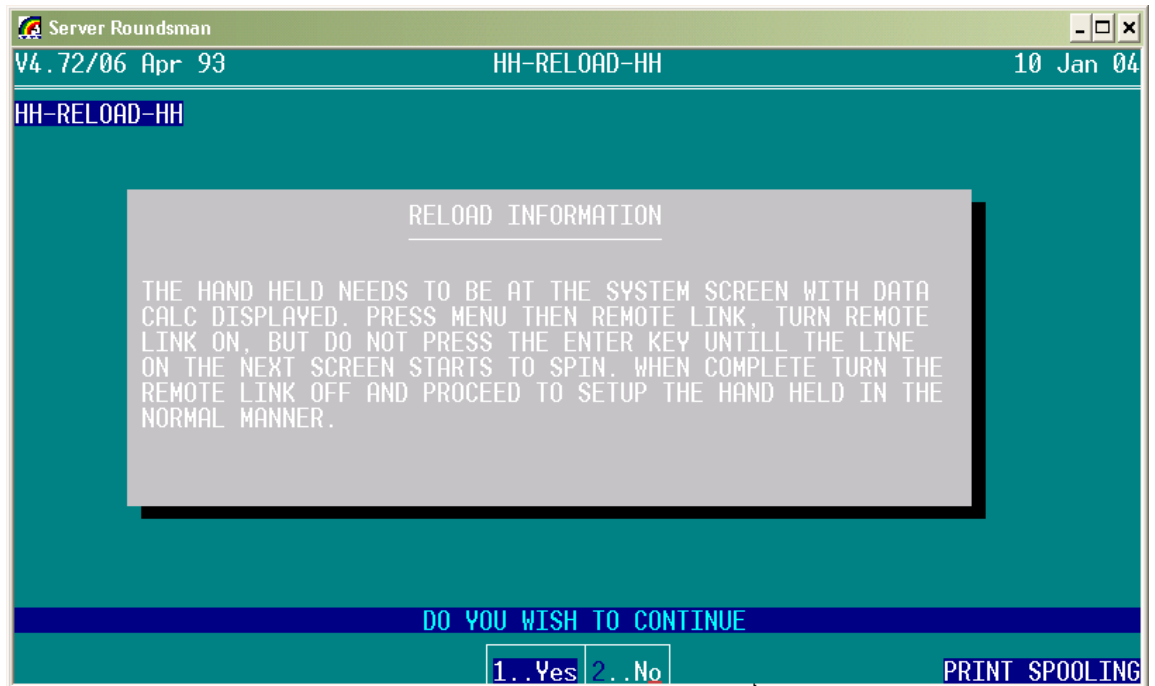
If the correct disk is not in the drive you will get this message.

Option 1



The system needs to be on this screen as it is now monitoring the communications so that the import and export routines are run. The only way to exit this option is to use the CTL+A key combination.

Option 6



As long as Rcom will run on the PC then the routine for reloading the Hand Held from within the Hand Helds Programmes will work. There is a set of circumstances where Rcom will not work, this is when you will need to use Psiwin. The floppy disk with the correct version of the software installed on your units needs to be in the floppy drive, or in the directory specified in the parameters. All communications software should be shut down before you run this option.